

# DECORATIVE FABRICS COLLECTION

EDITION 2025

# COLLECTION ACADIA



## FABRIC TECHNICAL DATA

Fabric composition: 28% Cotton, 39% Polyester,  
33% Acrylic

Material weight: 482 g/m<sup>2</sup>

Abrasion resistance: 40.000 cycles Martindale

Pilling resistance: 4

Lightfastness: 4

## INSTRUCTIONS FOR CLEANING AND MAINTANANCE

### CHARACTERISTICS:

- Multicolored, textured fabric, nice to touch
- Fancy boucle yarn gives the fabric an original look
- Highly breathable, high comfort of use

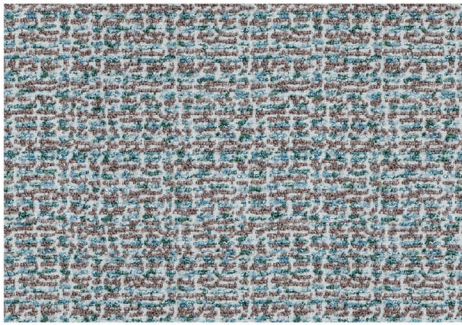
### MAINTENANCE:

The Acadia fabric requires very careful cleaning. Flicking of the fabric without using a vacuum cleaner or brush is recommended. The fabric does not have a chemical finish protecting it against water absorption and dirt. In case any slight stains appear, wipe the fabric immediately with a dry cloth without rubbing the surface. Not suitable for hand washing.

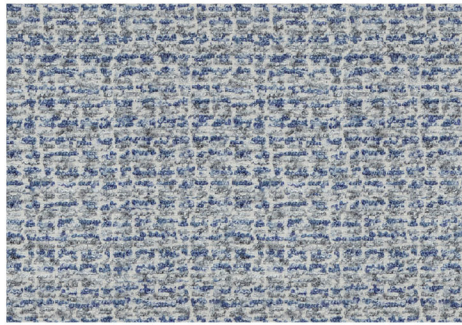
A thorough cleaning or removing substantial dirt should be entrusted to professional maintenance services companies.

A proper maintenance of the fabric is one of key warranty conditions, any treatments damaging the fabric surface constitute the grounds for the rejection of possible complaints.

Shades of fabric swatches and those of the furniture covering may vary slightly.



Acadia 03



Acadia 05



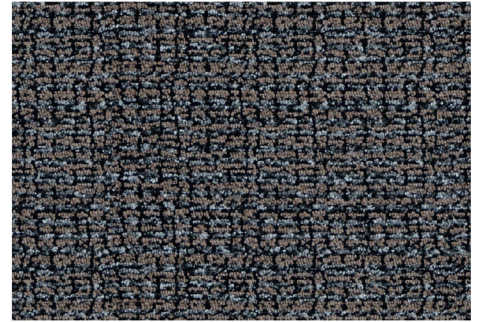
Acadia 08



Acadia 12



Acadia 19



Acadia 27

# COLLECTION CANVAS

## FABRIC TECHNICAL DATA

Fabric composition: 76% Polyester, 24% Acrylic

Material weight: 576 g/m<sup>2</sup>

Abrasion resistance: 30.000 cycles Martindale

Pilling resistance: 5

Lightfastness: 5

## INSTRUCTIONS FOR CLEANING AND MAINTANANCE

### CHARACTERISTICS:

- Fabric with a thick, clear weave, nice to touch
- Contrasting, shiny warp gives the fabric a beautiful look
- Highly breathable, high comfort of use

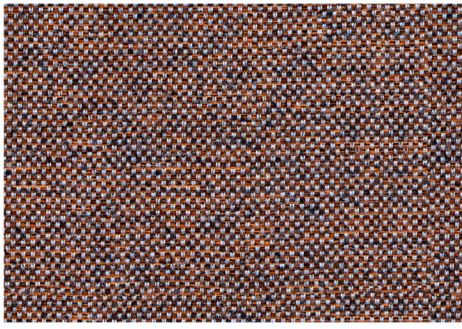
### MAINTENANCE:

The Canvas fabric requires very careful cleaning. Flicking of the fabric without using a vacuum cleaner or brush is recommended. The fabric does not have a chemical finish protecting it against water absorption and dirt. In case any slight stains appear, wipe the fabric immediately with a dry cloth without rubbing the surface. Not suitable for hand washing.

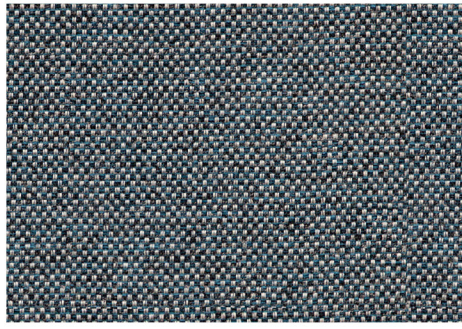
A thorough cleaning or removing substantial dirt should be entrusted to professional maintenance services companies.

A proper maintenance of the fabric is one of key warranty conditions, any treatments damaging the fabric surface constitute the grounds for the rejection of possible complaints.

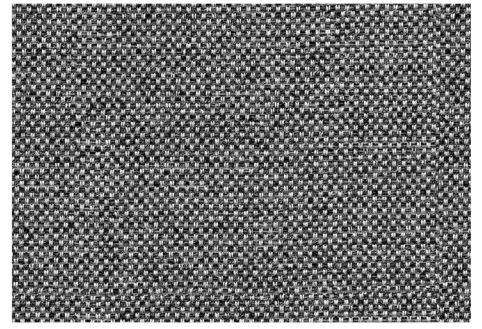
Shades of fabric swatches and those of the furniture covering may vary slightly.



Canvas 06



Canvas 14



Canvas 19

# COLLECTION KORFU

## FABRIC TECHNICAL DATA

Fabric composition: 100% Polyester  
Weight: 380 g/m<sup>2</sup>  
Abrasion resistance: 35.000 Martindale cycles  
Pilling resistance (1-5): 5  
Lightfastness (1-8): 7/8

## INSTRUCTIONS FOR CLEANING AND MAINTANANCE

### CHARACTERISTICS:

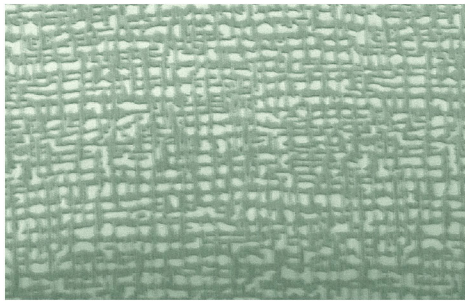
- single-color jacquard fabric with a textured pattern,
- soft and nice to touch with chenille yarn,
- highly breathable, high comfort of use

### MAINTENANCE:

A gentle vacuuming with a soft nozzle is recommended. The Korfu fabric does not have a chemical finish protecting it against water absorption and dirt. In case any slight stains appear, wipe the fabric immediately with a dry cloth. Avoid rubbing against a damp fabric. Korfu fabric is not machine washable, hand wash at 30° C. Do not wring and do not iron.

A thorough cleaning or removing substantial dirt should be entrusted to professional maintenance services companies. A proper maintenance of the fabric is one of key warranty conditions, any treatments damaging the fabric surface constitute the grounds for the rejection of possible complaints.

Shades of fabric swatches and those of the furniture covering may vary slightly.



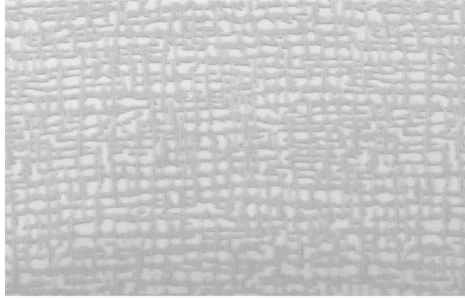
Korfu 05



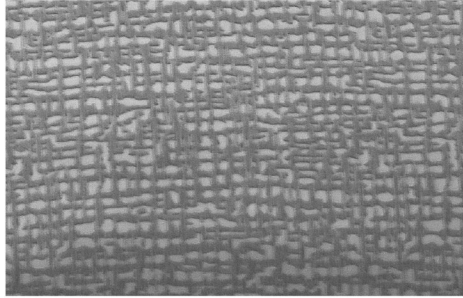
Korfu 50



Korfu 60



Korfu 65



Korfu 75

# COLLECTION LOCO

## FABRIC TECHNICAL DATA

Fabric composition: 100% Polyester  
Weight: 630 g/m<sup>2</sup>  
Abrasion resistance: 70.000 Martindale cycles  
Pilling resistance: 4/5  
Color fastness: 5

## INSTRUCTIONS FOR CLEANING AND MAINTANANCE

### CHARACTERISTICS:

- very soft fabric with chenille yarn, nice to touch
- different colors and thicknesses of yarn give the fabric a fancy look
- guarantees high comfort of use at any time of the year

### MAINTENANCE:

The Loco fabric requires careful cleaning. A gentle vacuuming with a very soft nozzle is recommended. It does not have a chemical finish protecting it against water absorption and dirt. In case any slight stains appear, wipe the fabric immediately with a dry cloth. Avoid rubbing against a damp fabric. The fabric can be hand washed at 30°C.

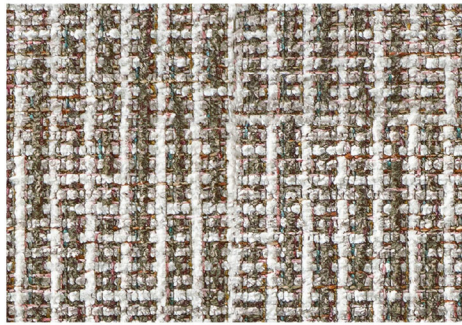
A thorough cleaning or removing substantial dirt should be entrusted to professional maintenance services companies. A proper maintenance of the fabric is one of key warranty conditions; any treatments damaging the fabric surface constitute grounds for the rejection of possible complaints.

Shades of fabric swatches and those of the furniture covering may vary slightly.

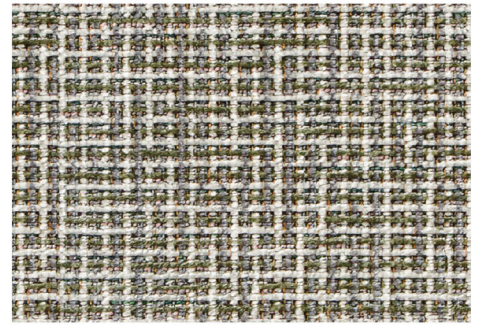




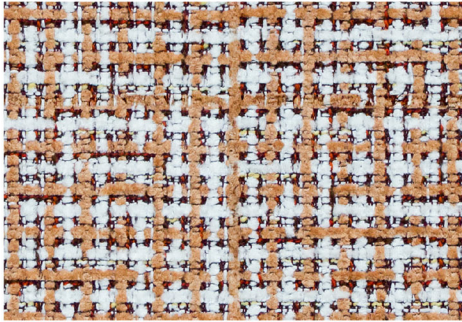
Loco 05



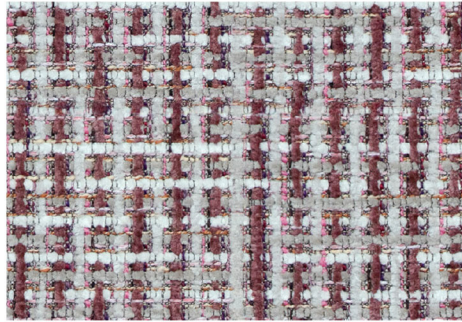
Loco 10



Loco 88



Loco 128



Loco 160

# COLLECTION MEGA

## FABRIC TECHNICAL DATA

Fabric composition: 100% Polyester  
Material weight: 421 g/m<sup>2</sup>  
Abrasion resistance: 50.000 cycles Martindale  
Pilling resistance: 4-5  
Lightfastness: 4

## INSTRUCTIONS FOR CLEANING AND MAINTANANCE

### CHARACTERISTICS:

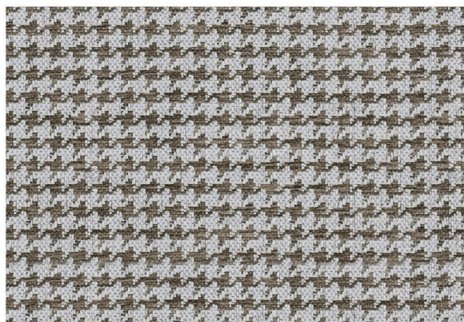
- Jacquard fabric made of chenille yarn, nice to touch
- The fabric has a classic, two-color crow's foot pattern
- Highly breathable, high comfort of use

### MAINTENANCE:

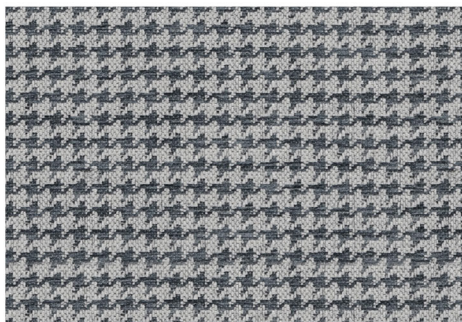
A gentle vacuuming with a soft nozzle is recommended. The Mega fabric does not have a chemical finish protecting it against water absorption and dirt. In case any slight stains appear, wipe the fabric immediately with a dry cloth. Avoid rubbing against a damp fabric. Not suitable for hand washing. A thorough cleaning or removing substantial dirt should be entrusted to professional maintenance services companies.

A proper maintenance of the fabric is one of key warranty conditions, any treatments damaging the fabric surface constitute the grounds for the rejection of possible complaints.

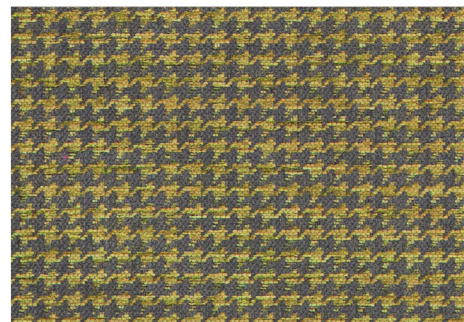
Shades of fabric swatches and those of the furniture covering may vary slightly.



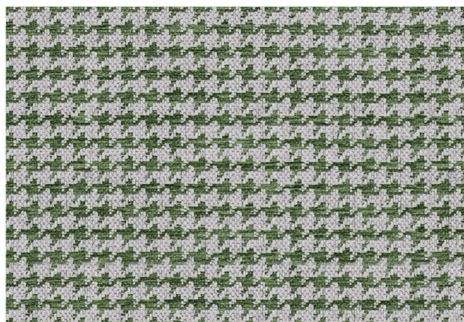
Mega 05



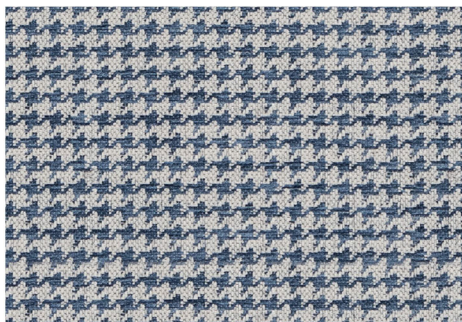
Mega 16



Mega 28



Mega 56



Mega 64

# COLLECTION NILO

## FABRIC TECHNICAL DATA

Fabric composition: 100% Polyester  
Weight: 520 g/m<sup>2</sup>  
Abrasion resistance: 30.000 Martindale cycles  
Pilling resistance: 4  
Color fastness: 6

## INSTRUCTIONS FOR CLEANING AND MAINTANANCE

### CHARACTERISTICS:

- soft, wide corduroy with a fog effect, very nice to touch
- very good air permeability
- pilling resistant, perfect for large sofas

### MAINTENANCE:

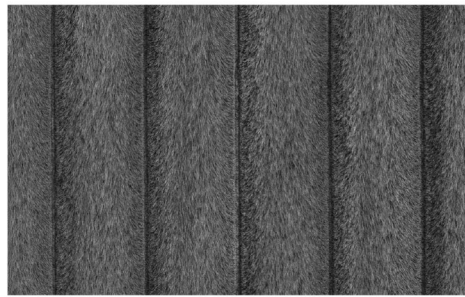
A very gently cleaning of the fabric with a very soft brush following the direction of the fibers is recommended. It does not have a chemical finish protecting it against water absorption and dirt. If wet stains occur, the dirt should be quickly wiped off with a dry cloth and the fabric left to dry. Do not rub damp fabric! Nilo fabric is not machine washable, hand wash at 30° C. Do not wring and do not iron!

A thorough cleaning or removing substantial dirt should be entrusted to professional maintenance companies.

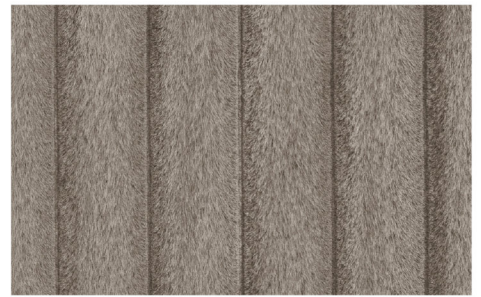
Proper maintenance of the fabric is one of the key warranty conditions. Any treatments damaging the fabric surface constitute grounds for the rejection of possible complaints. Shades of fabric swatches and those of the furniture covering may vary slightly.



Nilo 02



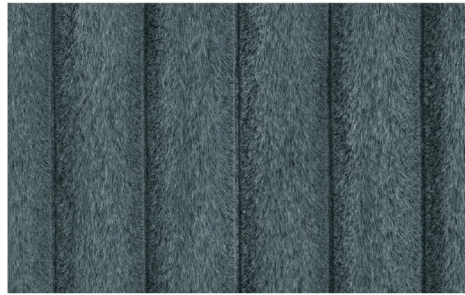
Nilo 45



Nilo 170



Nilo 373



Nilo 707



STELLA  
FURNITURE

STELLA Sp. z o.o.  
ul. Pabianicka 184/186  
PL - 93-402 Łódź

tel.: +48 42 633 82 03  
fax: +48 42 29 29 411



V03/2023

Dans un souci d'amélioration continue de ses produits et de façon à en maintenir la conformité en accord avec les textes de loi la société Stella Sp. z o.o. se réserve le droit de changer à tout moment les coloris, modèles, dimensions et fonctions présentées dans le présent catalogue. L'offre présentée dans ce catalogue ne s'entend pas comme une proposition commerciale au sens du code civil. Le catalogue est publié à but informatif et du fait des limitations liées aux techniques d'impression les coloris reproduits peuvent différer de la réalité.

On the way of continuous improvement of its products and to maintain product conformity with the laws Stella Sp. z o.o. reserves the right to change at any time colors, models, dimensions and functions shown in this catalogue. The offer presented in this catalogue isn't to be taken as a commercial offer in the civil code meaning. The catalogue is published for informational purposes and due to technical limitations of offset printing the colors reproduced can differ from reality.